

An abstract graphic composed of numerous thin, wavy, light gray lines that curve and flow together to form a large, organic, circular shape. The lines are more densely packed in some areas, creating a sense of depth and movement. The overall effect is reminiscent of a stylized sunburst or a topographical map. The background is a light gray gradient.

# Marco Piva

2023



L'utilizzo di materiali ricercati e un design fluido, distinguono la progettualità innovativa di Marco Piva che rende unica la produzione dell'inedita collezione Gemanco Design. Una creatività intensa, una combinazione elegante di forme e colori, un metaforico viaggio che si immerge in scenografiche architetture visive e cromatiche per un'ecclettica estetica che arreda il contemporaneo. La nuova Collezione che raccoglie diversi temi, li articola in composizioni geometriche morbide e lineari dalle vivaci palette.

The use of refined materials and the fluid design, characterize Marco Piva's innovative planning that makes unique the production of the exclusive Gemanco Design Collection. An intense creativity, an elegant combination of shapes and colours, a metaphorical journey that dips in a scenic, visual and chromatic architectures for an eclectic aesthetic which decorate the contemporary. The new collection collects different themes, develops them in a soft and linear geometric compositions with vivid palettes.

“**design  
rewrite  
the  
urban  
space**”

*Marco Piva*

2023

**GEMANCO<sup>®</sup>  
DESIGN**  
WALL EXPERIENCE



Studio  
Marco  
Piva

L'incontro con Nicola Rubino e Anna Corallo di GEMANCO DESIGN è stato un evento quasi fortuito di "affinità elettiva" e di reciproca intesa, avvenuto sotto il sole della Puglia davanti ad un mare di cristallo.

Con GEMANCO DESIGN abbiamo iniziato un percorso di immaginazione grafica, di ricerca sui materiali e sulle migliori tecniche di produzione per la realizzazione di una Collezione di superfici decorative applicabili in innumerevoli contesti dalla casa all'hotel, dagli spazi dedicati al lavoro e agli incontri, sino ai luoghi destinati al benessere.

La Collezione firmata "Marco Piva" di GEMANCO DESIGN si propone a diverse scale grafiche ed è caratterizzata da textures e patterns di grande eleganza, caratterizzati da scelte cromatiche attente alle diverse possibili collocazioni e arricchite da superfici tattili che ne esaltano la percezione non solo visiva.

Con GEMANCO DESIGN è quindi iniziato un percorso comune in cui il Design delle superfici interne si estende armonicamente sino a coinvolgere le superfici dell'Architettura, alla ricerca di una inusitata continuità percettiva.

My encounter with Mr Nicola Rubino and Mrs Anna Corallo from Gemanco Design, has been almost fortuitous of "elective affinity" and mutual understanding, happened under the Apulian sun and in front of a crystal sea.

With Gemanco Design, we began a journey of graphic imagination, research on material and on the best production techniques, for the realization of a Collection of decorative surfaces suitable in many applications: house, hotel, work spaces and meeting spaces, wellness areas.

The Marco Piva Collection offers different graphic scales and it is characterized by textures and patterns of great elegance, marked by chromatic choices, attentive to many possible solutions and enriched with touch-sensitive surfaces that enhance the perception, not only based on visual elements.

It's begun a common journey with Gemanco Design in which the interior Design extends to involve the surfaces of the "Architecture", in pursuit of unusual perceptive continuity.

*Marco Piva*

01

ARCO

02

LETTERING

03

NEW RADICAL

04

SOFT ARCHITECTURE

05

VARIATION

06

VORTICE

Marco Piva  
*Collection*

Un elegante arco si espande, incastra linea e colore per un'architettura decorativa dell'abitare. Cromie tenui ed intense giocano insieme per disegnare insoliti percorsi geometrici.

An elegant arc expands, fits together line style and colour, to reach a decorative architecture of the living space. Soft and intense colours play together to draw unusual geometric paths.

ARCO

01

# ARCO 01

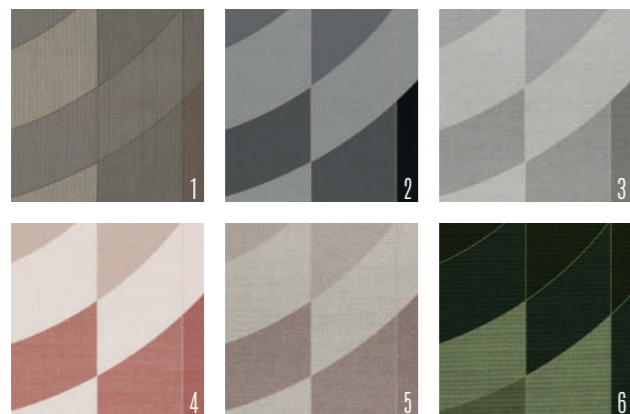


# ARCO 01

## GRAPHIC COMPOSITION

Comporre la grafica accostando i pannelli modulari A+B, ripetendoli e/o invertendone il verso fino a copertura totale della superficie da rivestire.

The graphic design is composed by matching modular panels "A+B", repeating or reversing them, up to full wall coverage.



MODULE A

MODULE B



350 CM



# ARCO 12



Marco Piva  
*Collection*

# ARCO 12

## GRAPHIC COMPOSITION

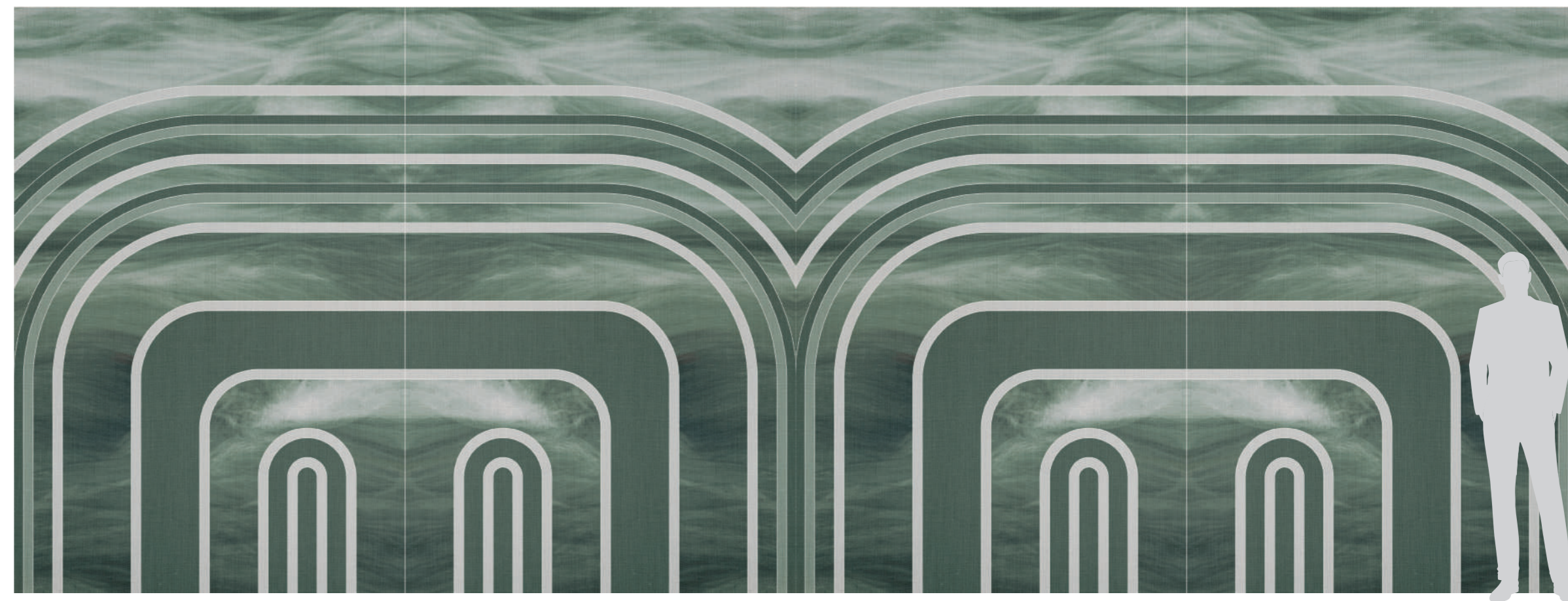
Comporre la grafica accostando i pannelli modulari A+B, ripetendoli e/o invertendone il verso fino a copertura totale della superficie da rivestire.

The graphic design is composed by matching modular panels "A+B", repeating or reversing them, up to full wall coverage.



MODULE A

MODULE B



350 CM

# ARCO 13

Marco Piva  
*Collection*

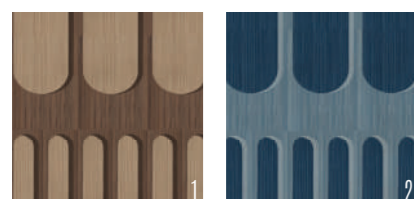


# ARCO 13

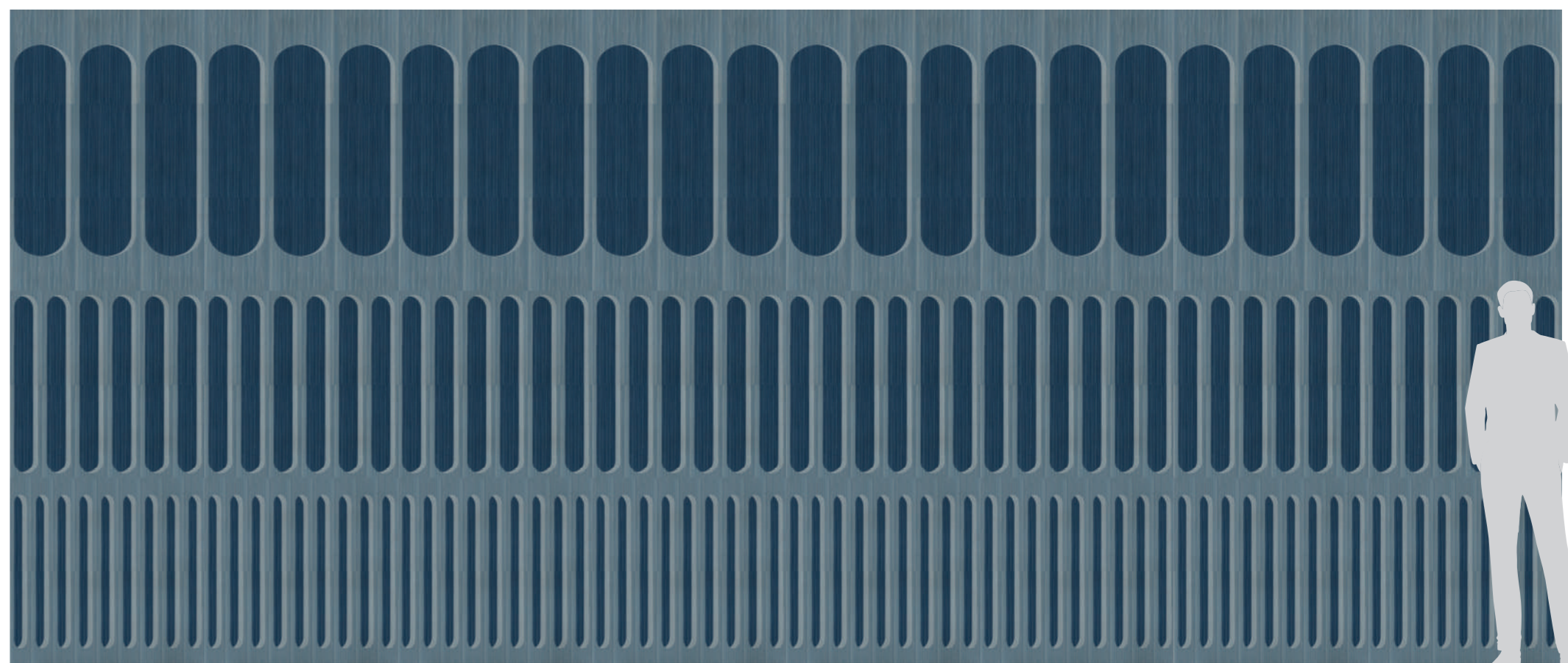
## GRAPHIC COMPOSITION

La composizione grafica si ottiene con un solo modulo "A" che genera il pattern e viene ripetuto "n" volte fino a copertura totale della superficie da rivestire.

The graphic design is composed by a single module "A" that creates the pattern and it is then repeated "n" times, up to full wall coverage.



MODULE A



350 CM

ARCO  
14



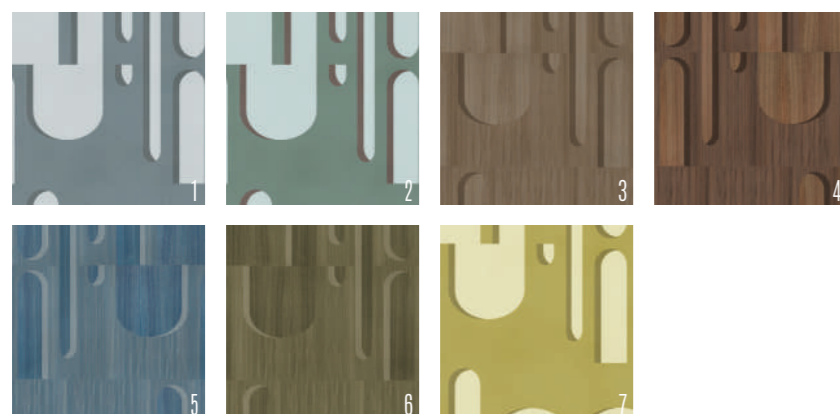
Marco Piva  
*Collection*

# ARCO 14

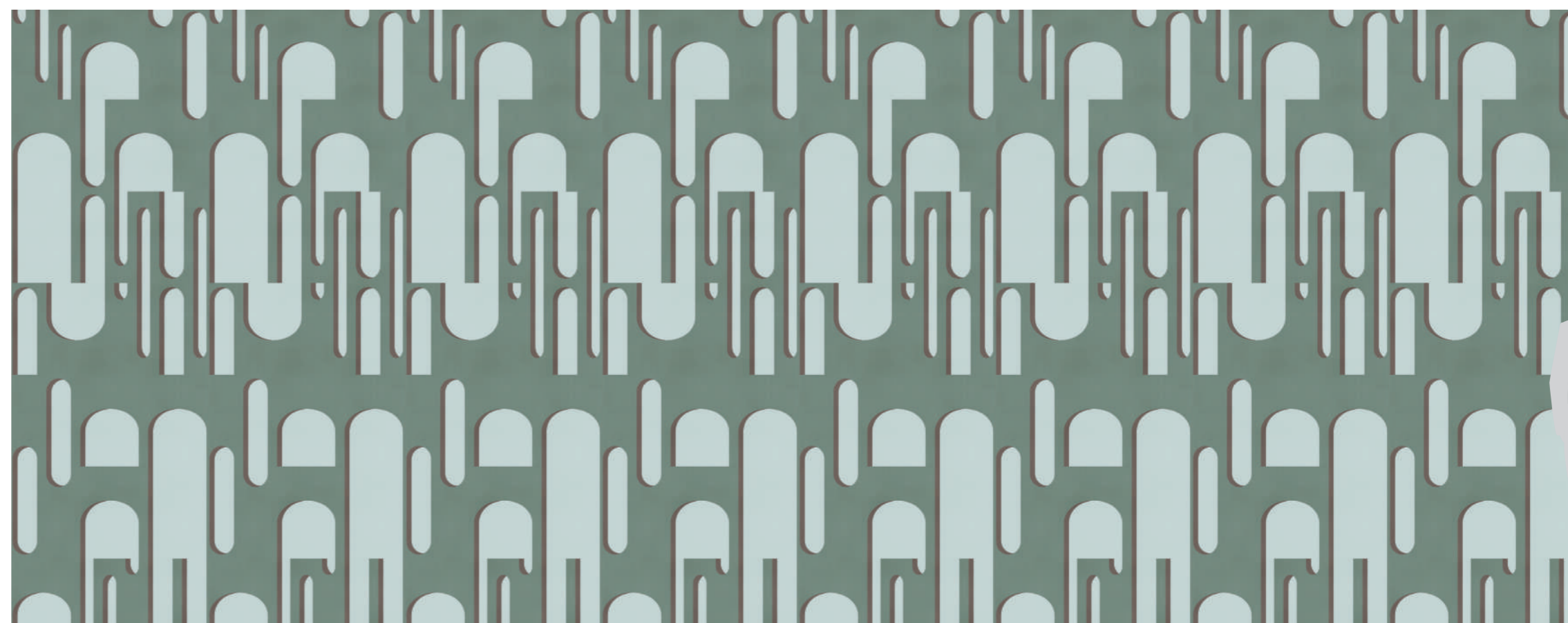
## GRAPHIC COMPOSITION

La composizione grafica si ottiene con un solo modulo "A" che genera il pattern e viene ripetuto "n" volte fino a copertura totale della superficie da rivestire.

The graphic design is composed by a single module "A" that creates the pattern and it is then repeated "n" times, up to full wall coverage.



MODULE A



350 CM

# ARCO 15



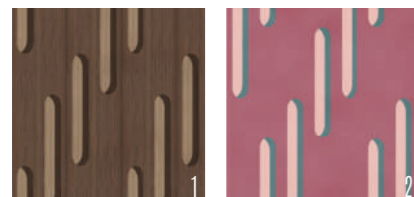
Marco Piva  
*Collection*

# ARCO 15

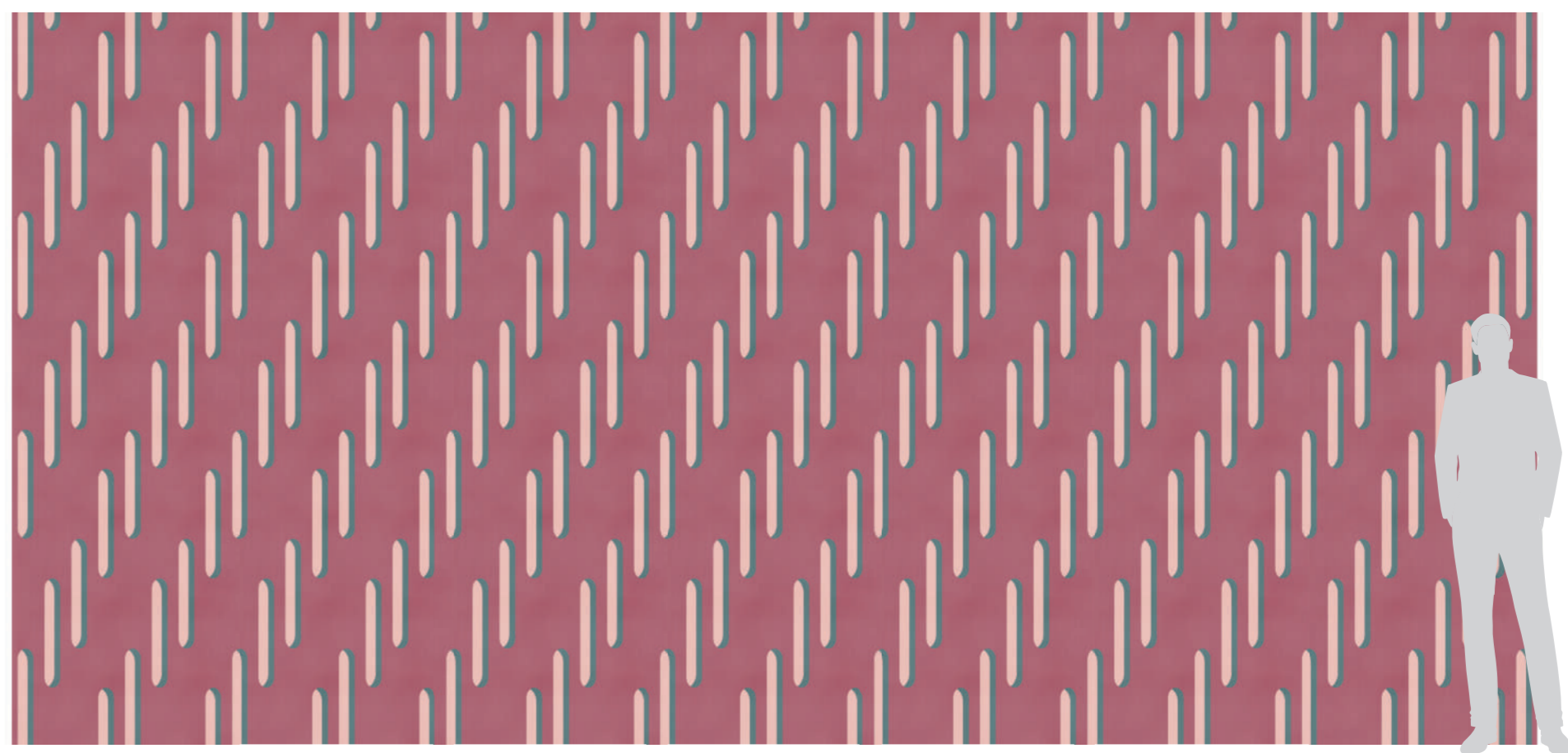
## GRAPHIC COMPOSITION

La composizione grafica si ottiene con un solo modulo "A" che genera il pattern e viene ripetuto "n" volte fino a copertura totale della superficie da rivestire.

The graphic design is composed by a single module "A" that creates the pattern and it is then repeated "n" times, up to full wall coverage.



MODULE A





**F**orme aggraziate che raccontano, non più solo semplici lettere dell'alfabeto ma segni d'emozione. Tonalità calde e decise si mescolano tra loro in armonia, in un affascinante disegno simmetrico.

Graceful shapes that talk about not only the simple alphabet letters but signs of emotions. Warm and strong tones are mixed each other in harmony, in a charming symmetrical design.

LETTERING

02

# LETTERING 01

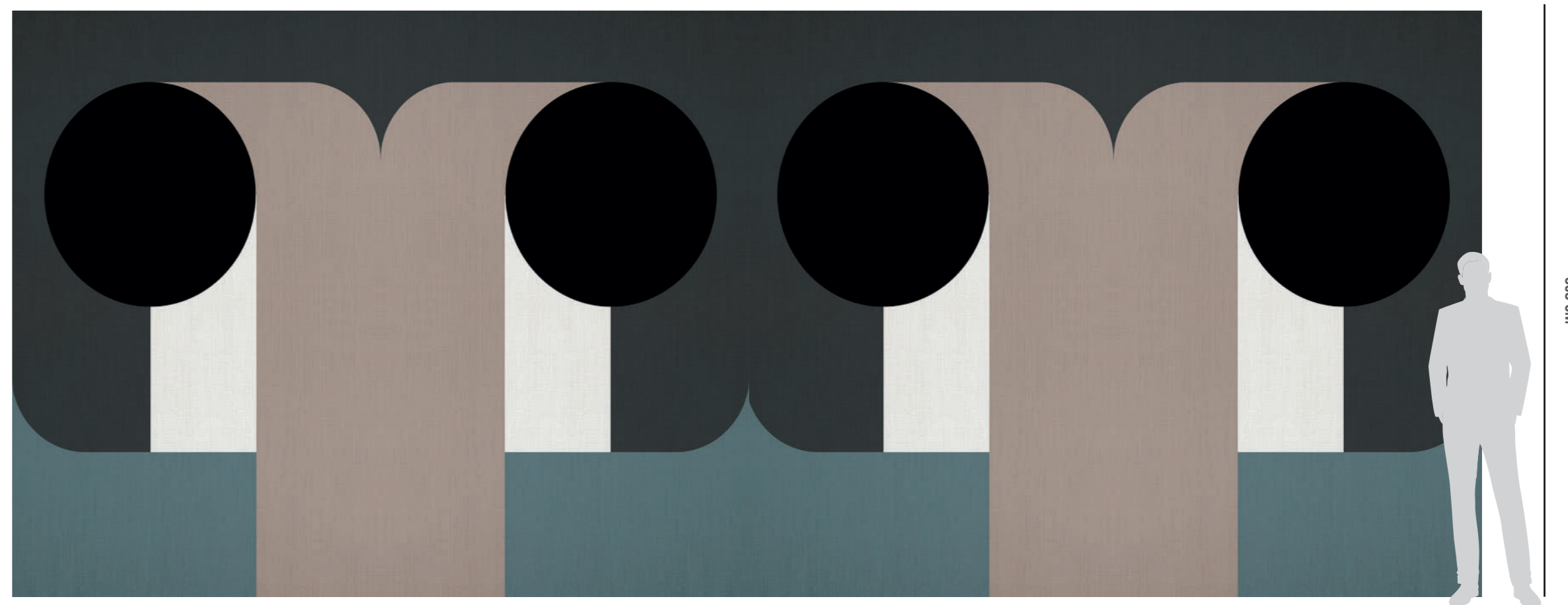


# LETTERING 01

## GRAPHIC COMPOSITION

Comporre la grafica accostando i pannelli modulari A+B, ripetendoli e/o invertendone il verso fino a copertura totale della superficie da rivestire.

The graphic design is composed by matching modular panels "A+B", repeating or reversing them, up to full wall coverage.

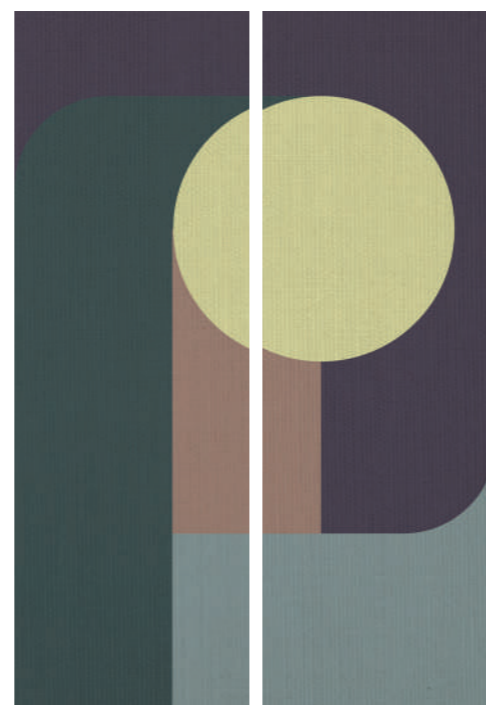
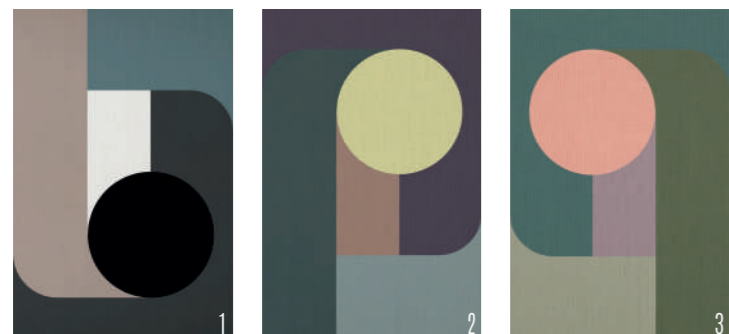


# LETTERING 01

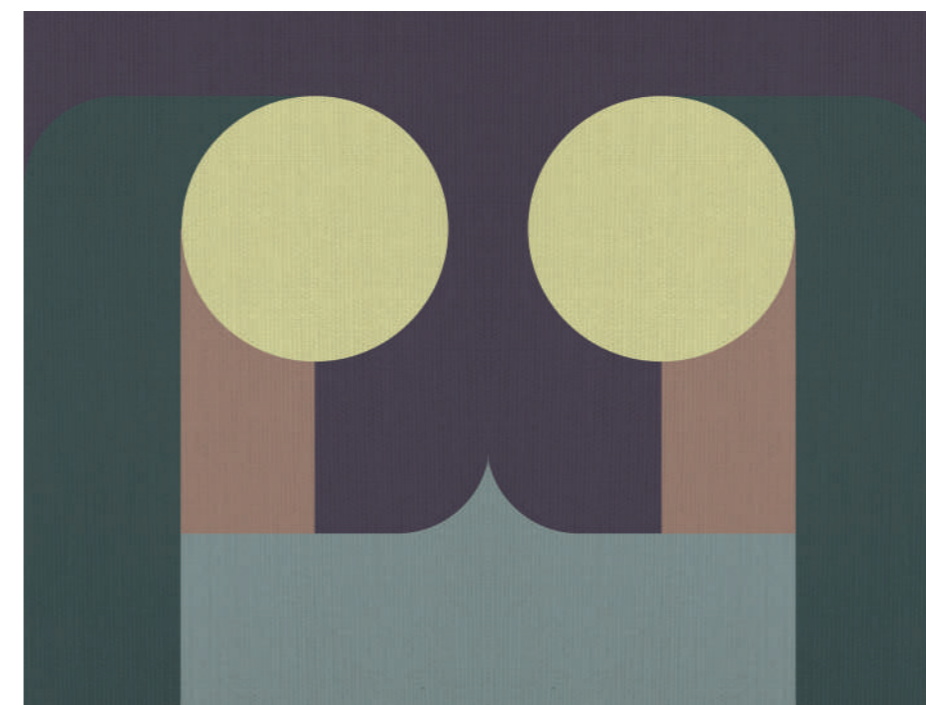
## GRAPHIC COMPOSITION

Comporre la grafica accostando i pannelli modulari A+B, ripetendoli e/o invertendone il verso fino a copertura totale della superficie da rivestire.

The graphic design is composed by matching modular panels "A+B", repeating or reversing them, up to full wall coverage.



MODULE A MODULE B



VAR A



VAR B



VAR C

# LETTERING 12

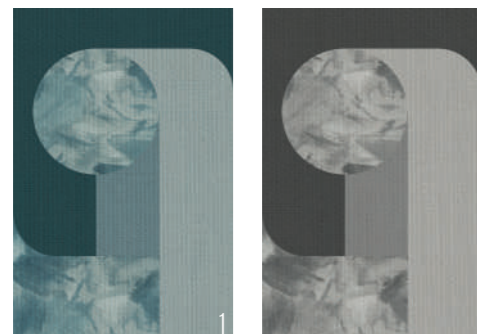


# LETTERING 12

## GRAPHIC COMPOSITION

Comporre la grafica accostando i pannelli modulari A+B, ripetendoli e/o invertendone il verso fino a copertura totale della superficie da rivestire.

The graphic design is composed by matching modular panels "A+B", repeating or reversing them, up to full wall coverage.

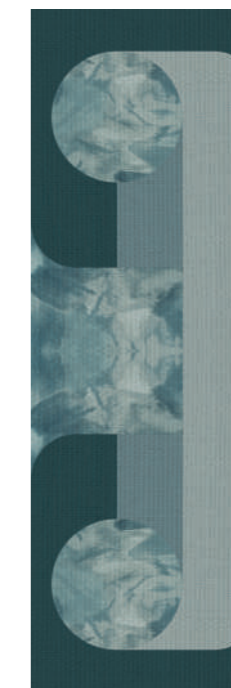


MODULE A

MODULE B



VAR A



VAR B



VAR D

Ogni più piccolo dettaglio si fa immagine. Ogni linea si fa movimento chiuso o aperto, pieno o vuoto. Colori vivaci ed eleganti uniscono forme semplici e cangianti, per un risultato ironico e innovativo.

Every smaller detail becomes image. Every line becomes movement, open or closed, empty or full. Bright and elegant colours combine simply and changing shapes to get an ironic and innovative result.

NEW RADICAL

03

# NEW RADICAL 01





# NEW RADICAL 01

## GRAPHIC COMPOSITION

La composizione grafica si ottiene con un solo modulo "A" che genera il pattern e viene ripetuto "n" volte fino a copertura totale della superficie da rivestire.

The graphic design is composed by a single module "A" that creates the pattern and it is then repeated "n" times, up to full wall coverage.



MODULE A



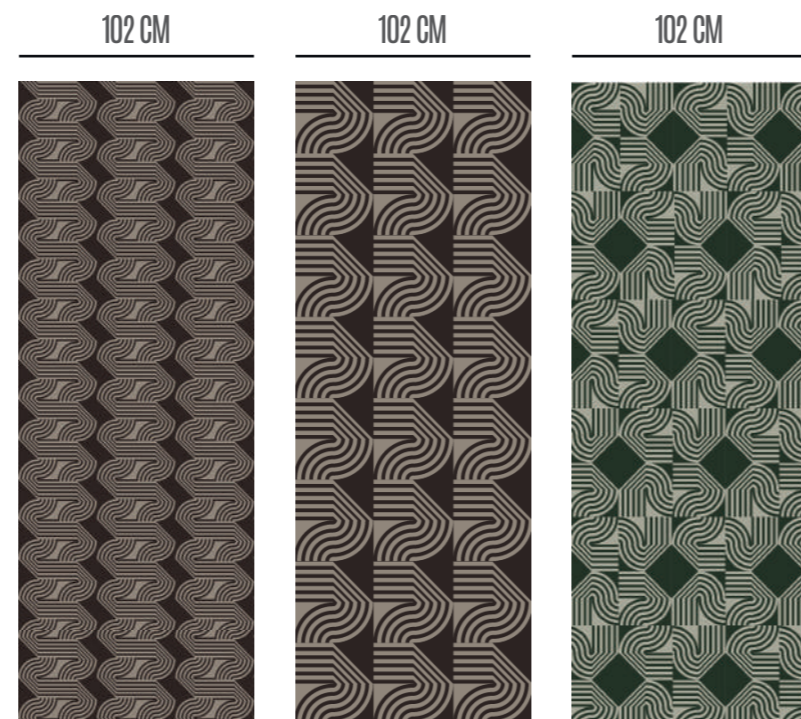
350 CM

# NEW RADICAL 01

## NUANCES

La composizione grafica si ottiene con un solo modulo "A" che genera il pattern e viene ripetuto "n" volte fino a copertura totale della superficie da rivestire.

The graphic design is composed by a single module "A" that creates the pattern and it is then repeated "n" times, up to full wall coverage.



VAR A

VAR B

VAR C



VAR D

VAR E



NEW RADICAL  
02

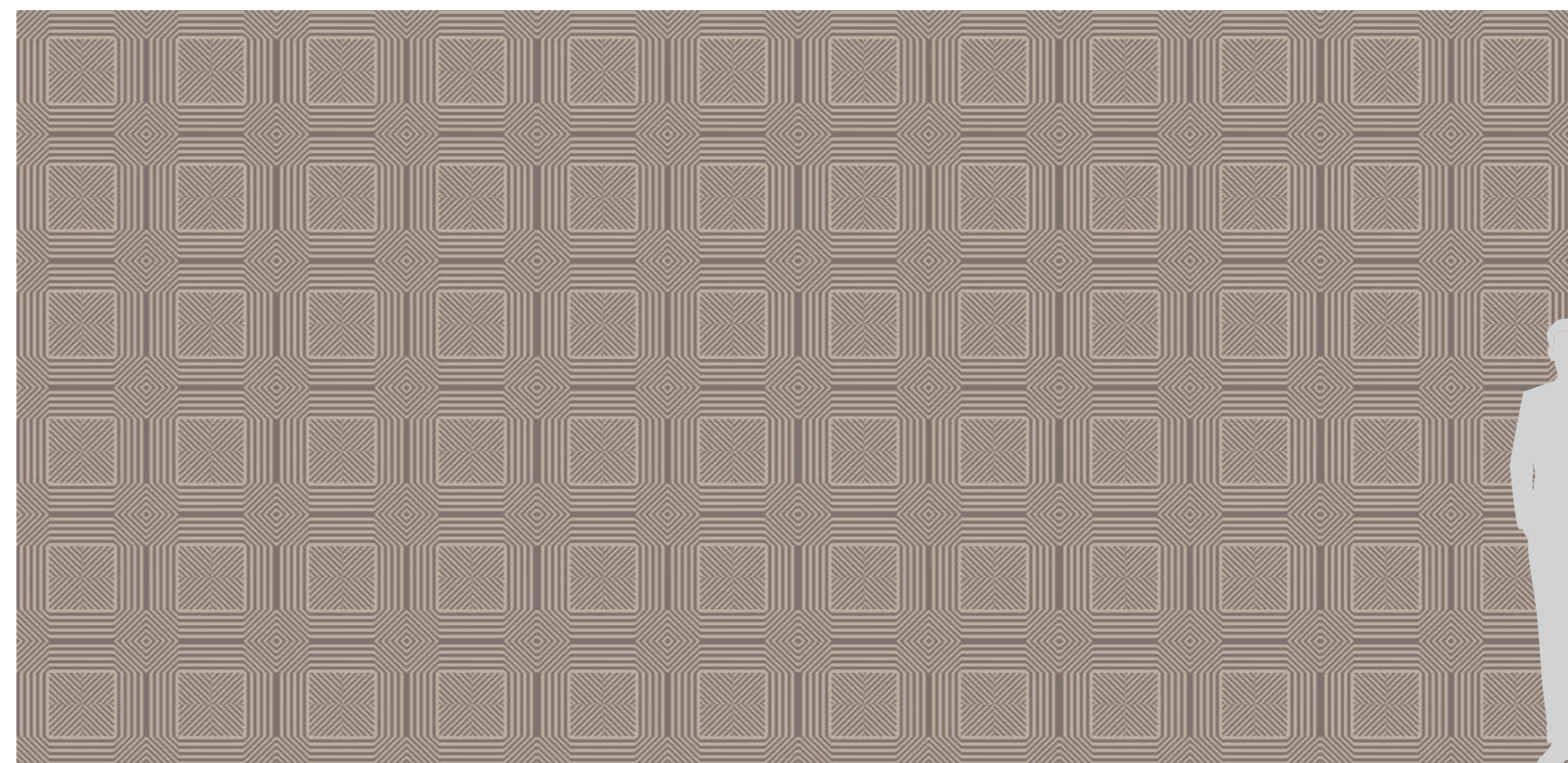
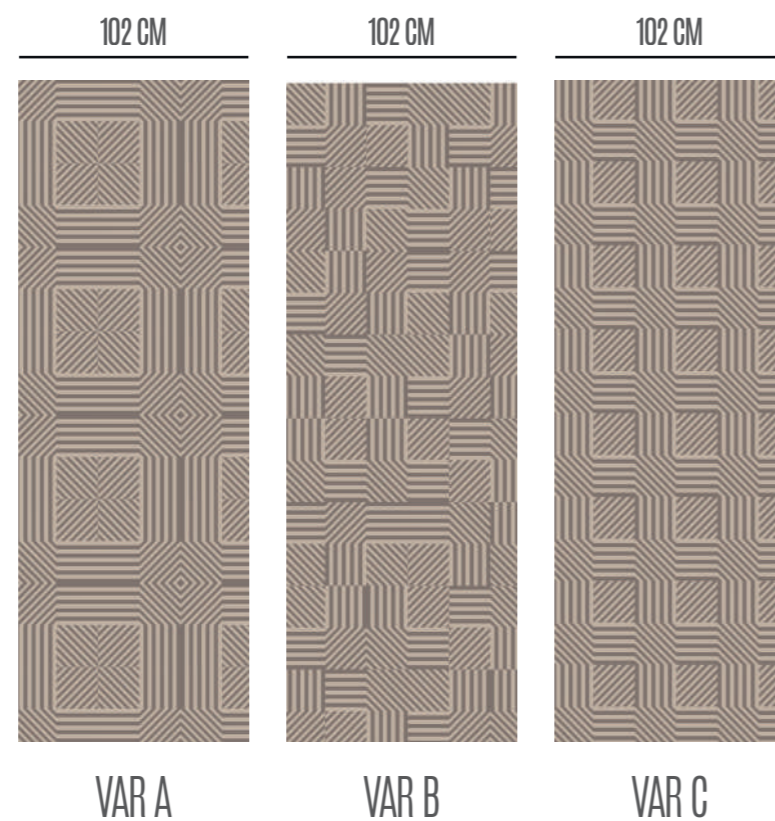
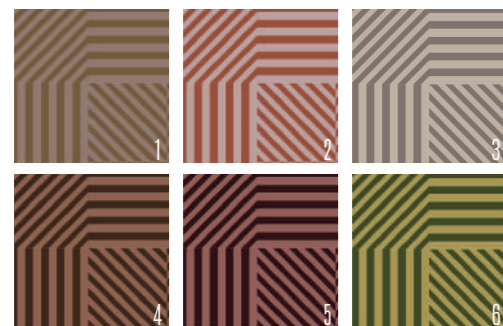


# NEW RADICAL 12

## GRAPHIC COMPOSITION

La composizione grafica si ottiene con un solo modulo "A" che genera il pattern e viene ripetuto "n" volte fino a copertura totale della superficie da rivestire.

The graphic design is composed by a single module "A" that creates the pattern and it is then repeated "n" times, up to full wall coverage.



350 CM

# NEW RADICAL 03

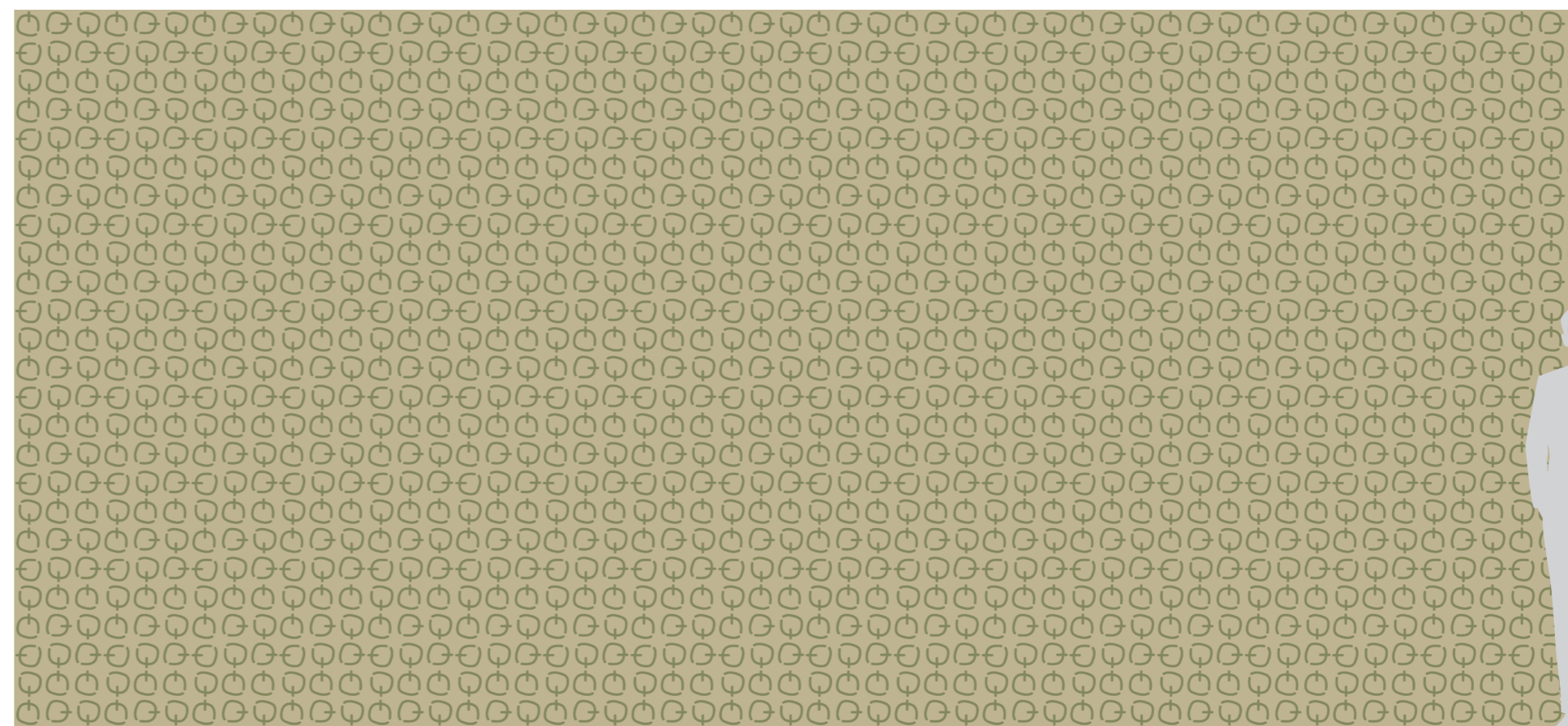


# NEW RADICAL 13

## GRAPHIC COMPOSITION

La composizione grafica si ottiene con un solo modulo "A" che genera il pattern e viene ripetuto "n" volte fino a copertura totale della superficie da rivestire.

The graphic design is composed by a single module "A" that creates the pattern and it is then repeated "n" times, up to full wall coverage.



# NEW RADICAL )4

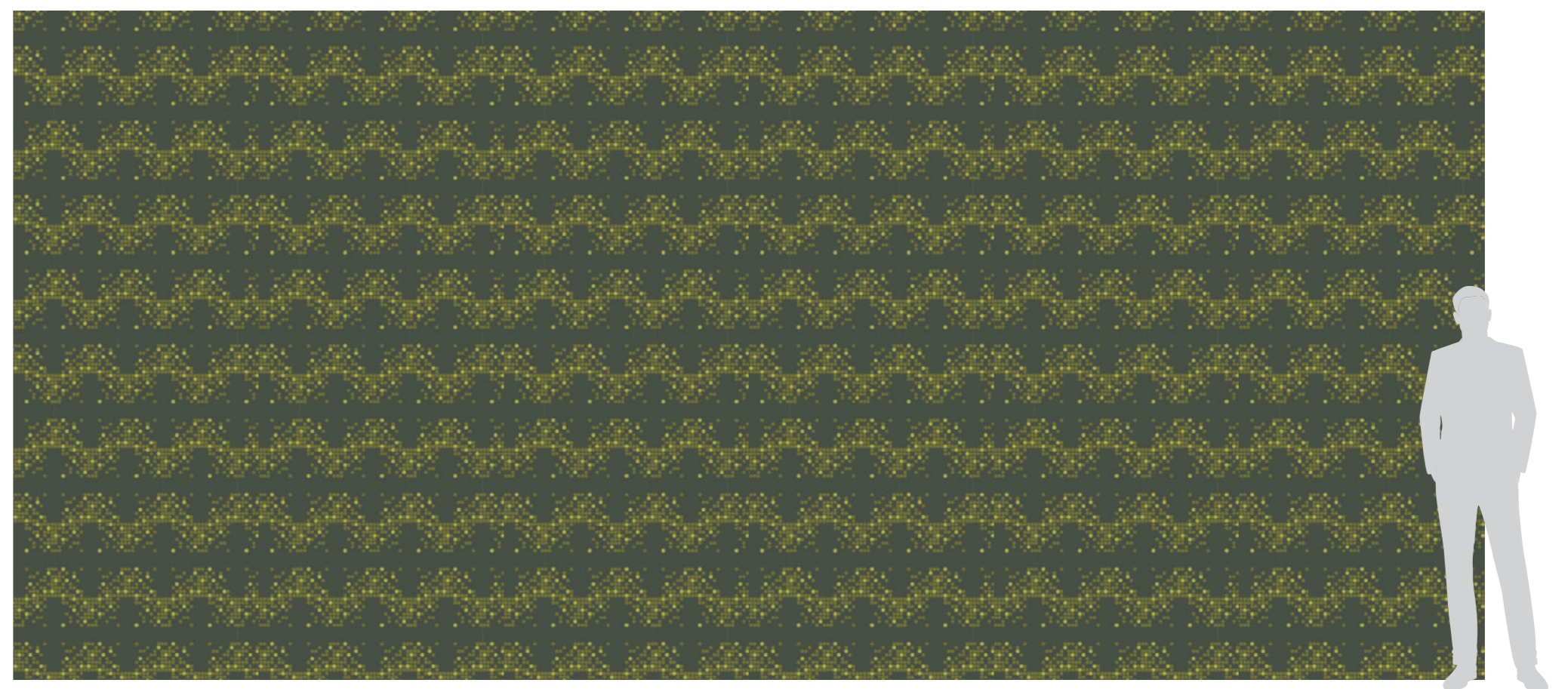
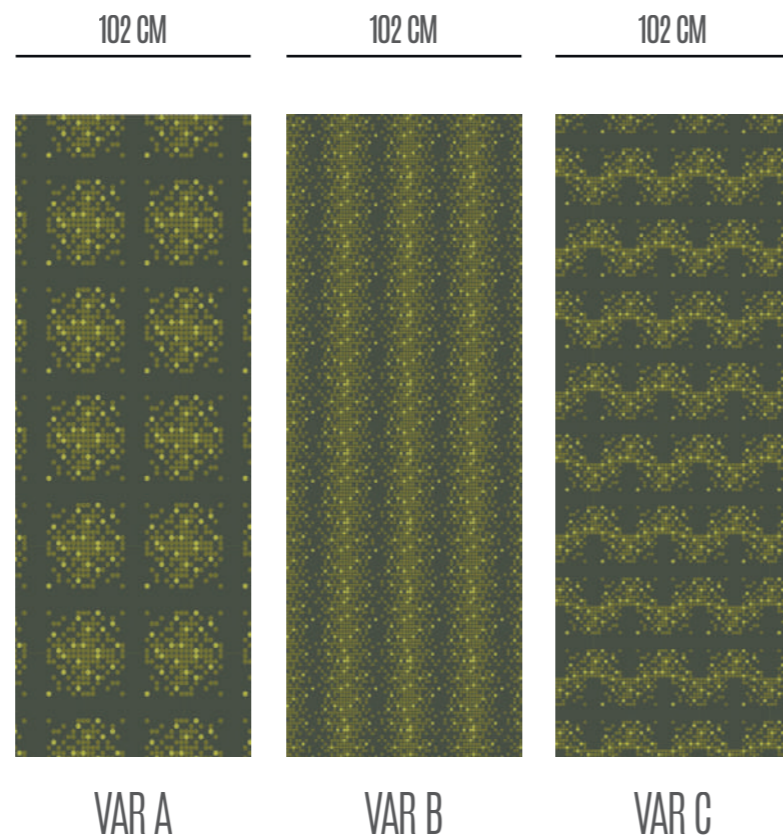
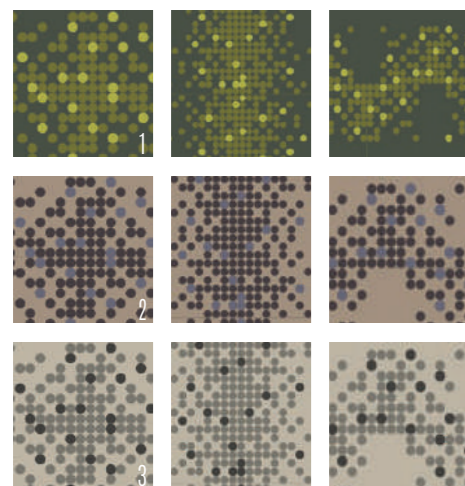


# NEW RADICAL 14

## GRAPHIC COMPOSITION

La composizione grafica si ottiene con un solo modulo "A" che genera il pattern e viene ripetuto "n" volte fino a copertura totale della superficie da rivestire.

The graphic design is composed by a single module "A" that creates the pattern and it is then repeated "n" times, up to full wall coverage.





# NEW RADICAL 15

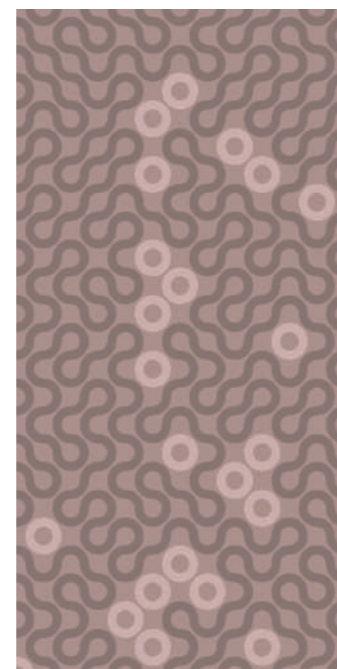


# NEW RADICAL 05

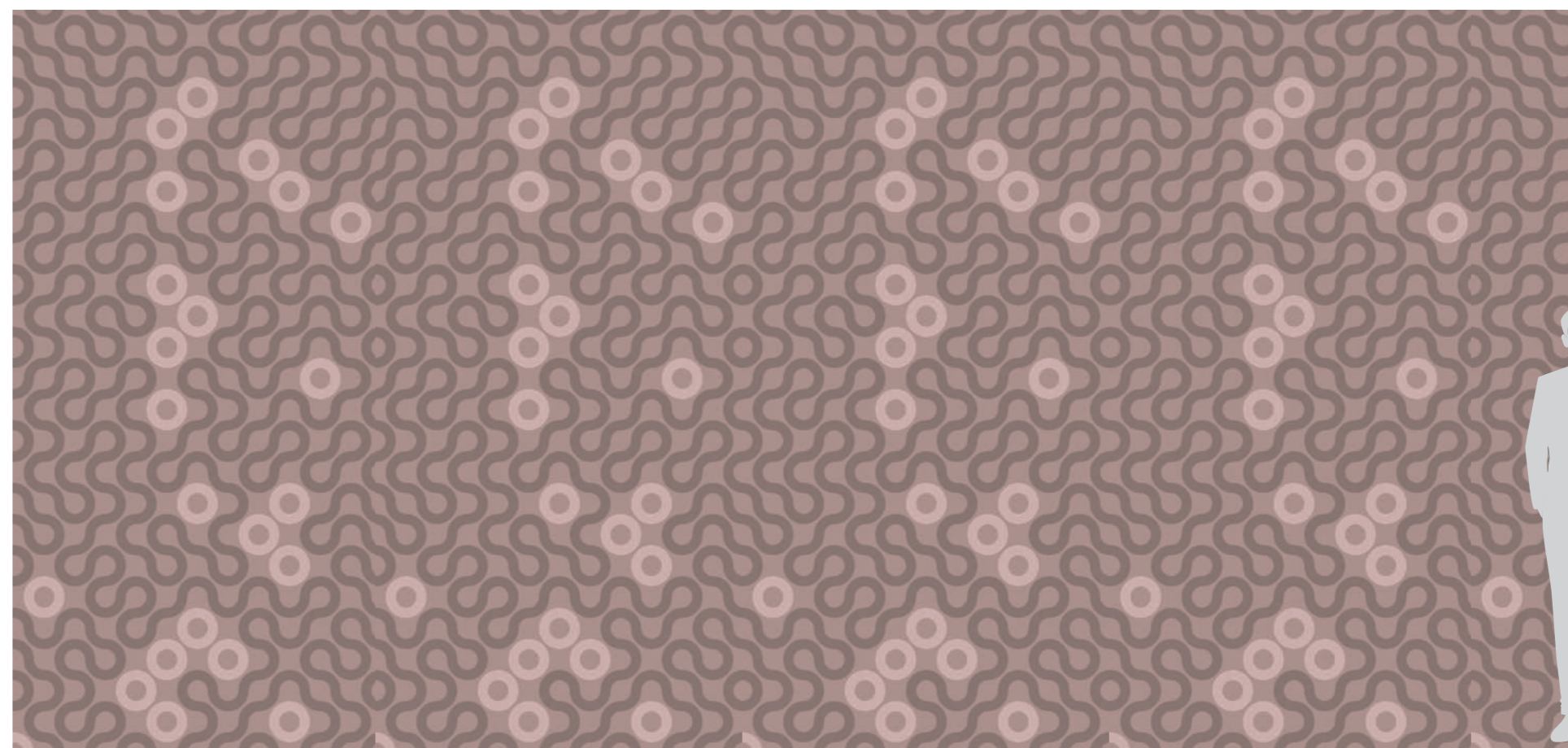
## GRAPHIC COMPOSITION

La composizione si ottiene con un solo modulo grafico che genera il pattern e viene ripetuto "n" volte fino a copertura totale della superficie da rivestire.

The design is composed by a graphic single module that creates the pattern and it is then repeated "n" times, up to full wall coverage.



MODULE A



350 CM

# NEW RADICAL 06



Marco Piva  
*Collection*

# NEW RADICAL 16

## GRAPHIC COMPOSITION

Comporre la grafica accostando i pannelli modulari A+B, ripetendoli e/o invertendone il verso fino a copertura totale della superficie da rivestire.

The graphic design is composed by matching modular panels "A+B", repeating or reversing them, up to full wall coverage.



350 CM

# NEW RADICAL 07



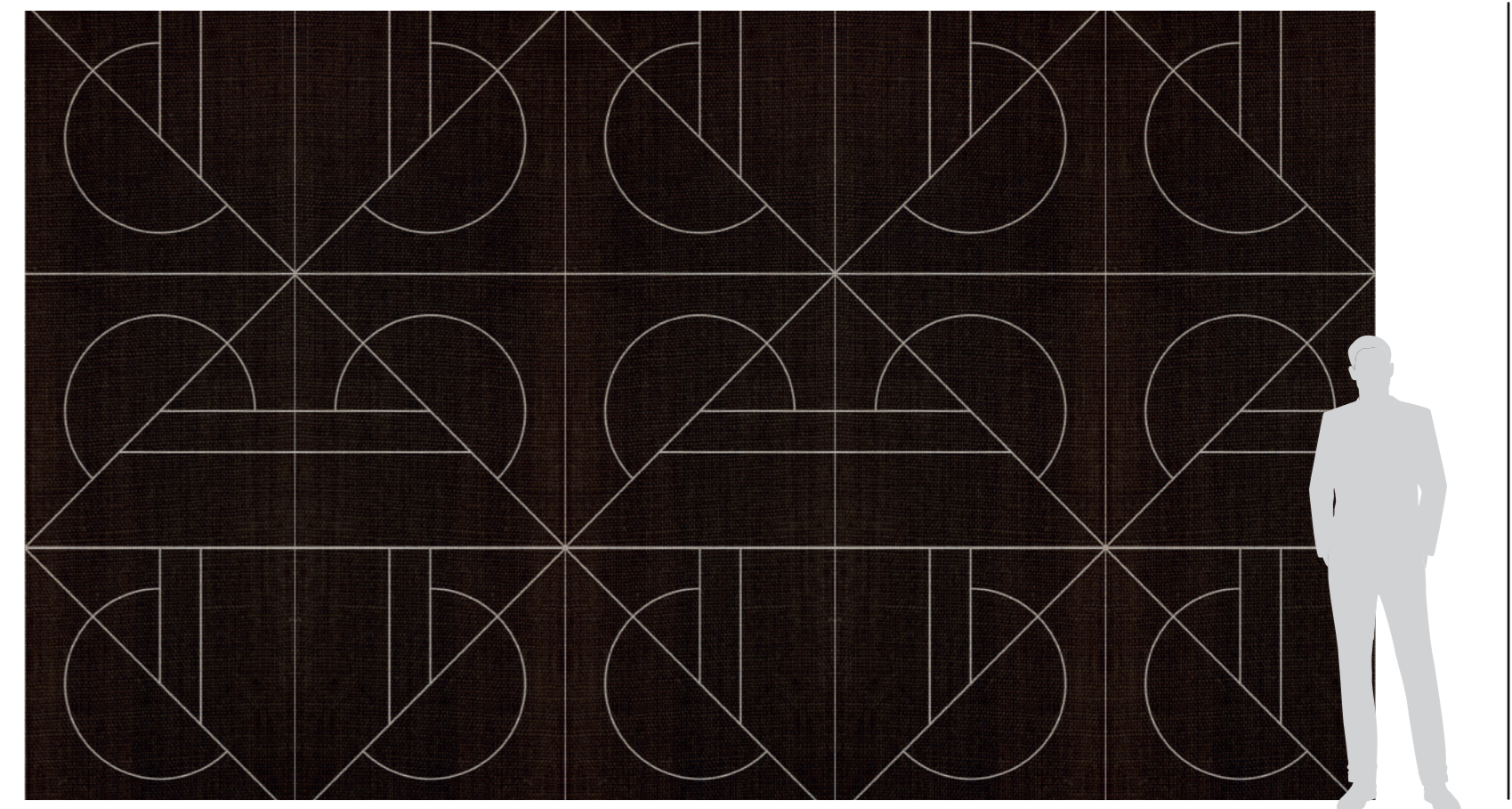
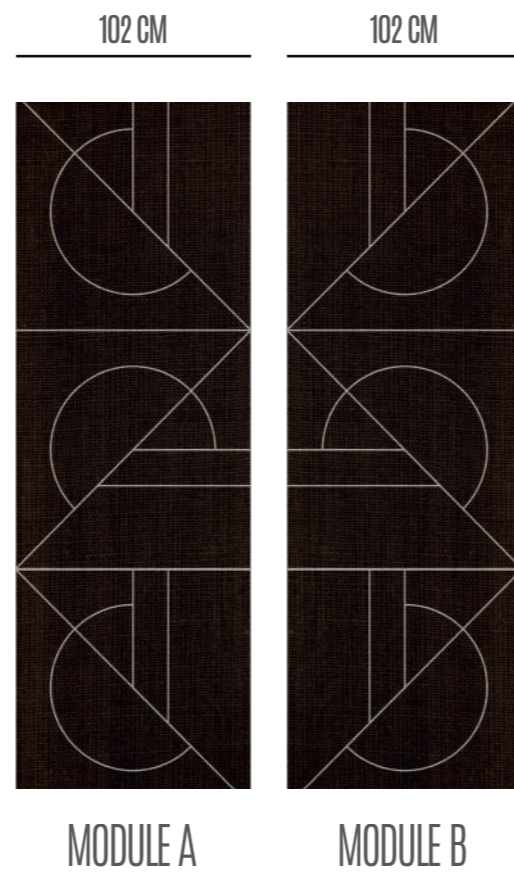
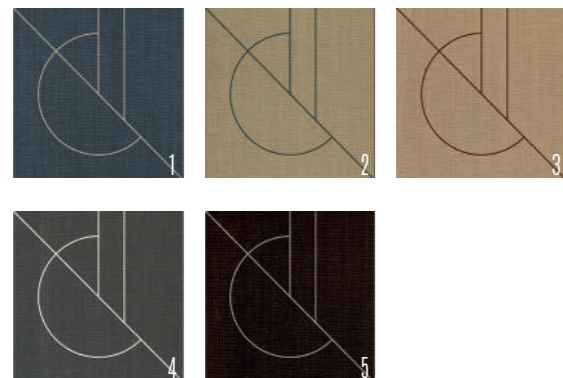
Marco Piva  
*Collection*

# NEW RADICAL 17

## GRAPHIC COMPOSITION

Comporre la grafica accostando i pannelli modulari A+B, ripetendoli e/o invertendone il verso fino a copertura totale della superficie da rivestire.

The graphic design is composed by matching modular panels "A+B", repeating or reversing them, up to full wall coverage.



# NEW RADICAL 18

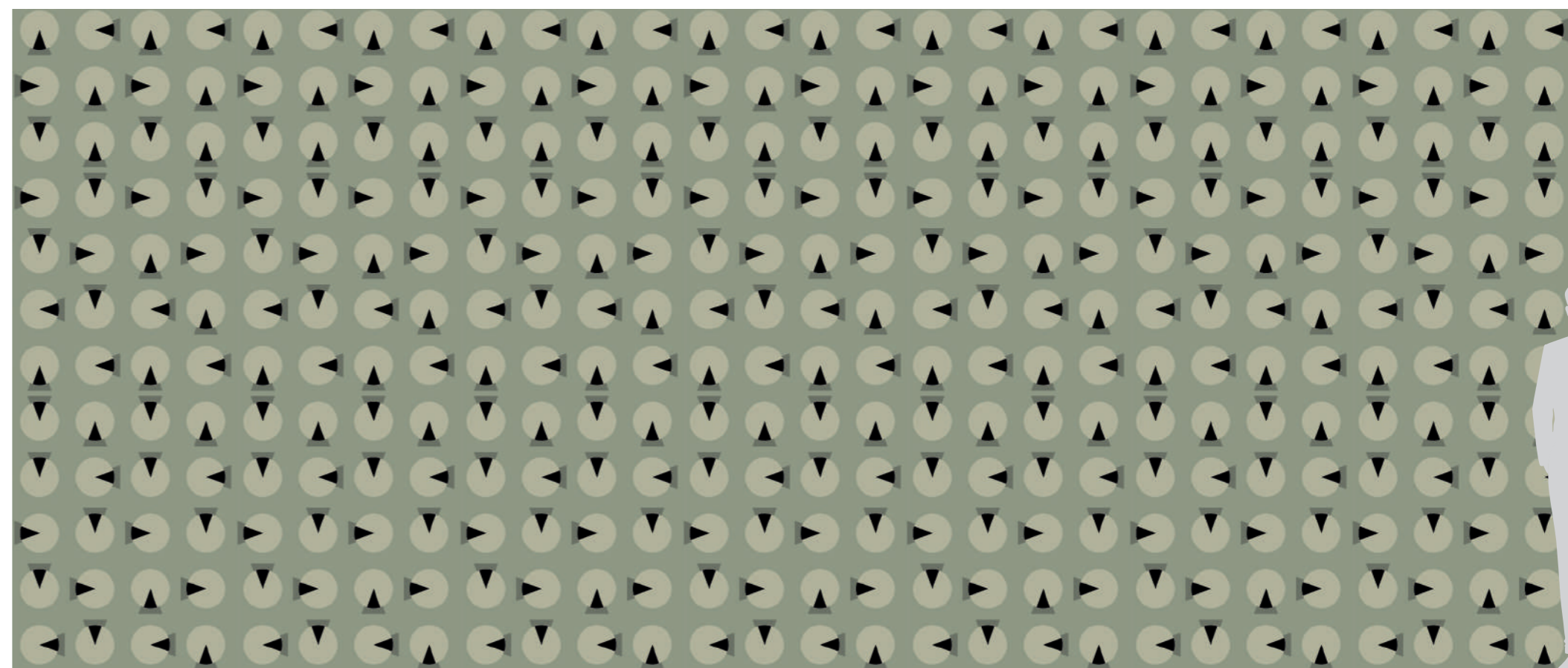
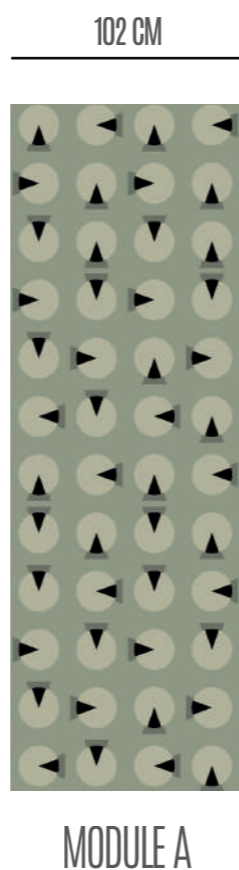
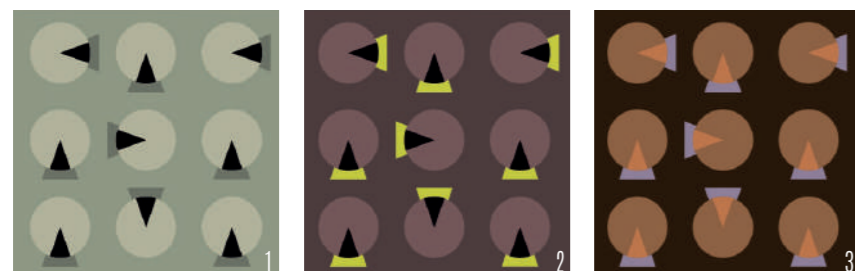


# NEW RADICAL 18

## GRAPHIC COMPOSITION

La composizione grafica si ottiene con un solo modulo "A" che genera il pattern e viene ripetuto "n" volte fino a copertura totale della superficie da rivestire.

The graphic design is composed by a single module "A" that creates the pattern and it is then repeated "n" times, up to full wall coverage.



350 CM



**P**iani poligonali, punti di vista rovesciati, forme inclinate, superfici spezzate, restituiscono effetti visivi che rompono i canoni tradizionali. Soft Architecture inverte l'ordine, combinando alle geometrie complesse, le linee dinamiche contemporanee in una estrema poesia visiva.

Polygonal levels, upside-down perspectives, inclined shapes, broken surfaces, give back visual effects that break the traditional canons. "Soft Architecture" reverses the order, combining contemporary dynamic lines to complex geometries in an extreme visual poetry.

SOFT ARCHITECTURE

04

# SOFT ARCHITECTURE 01



# SOFT ARCHITECTURE 01

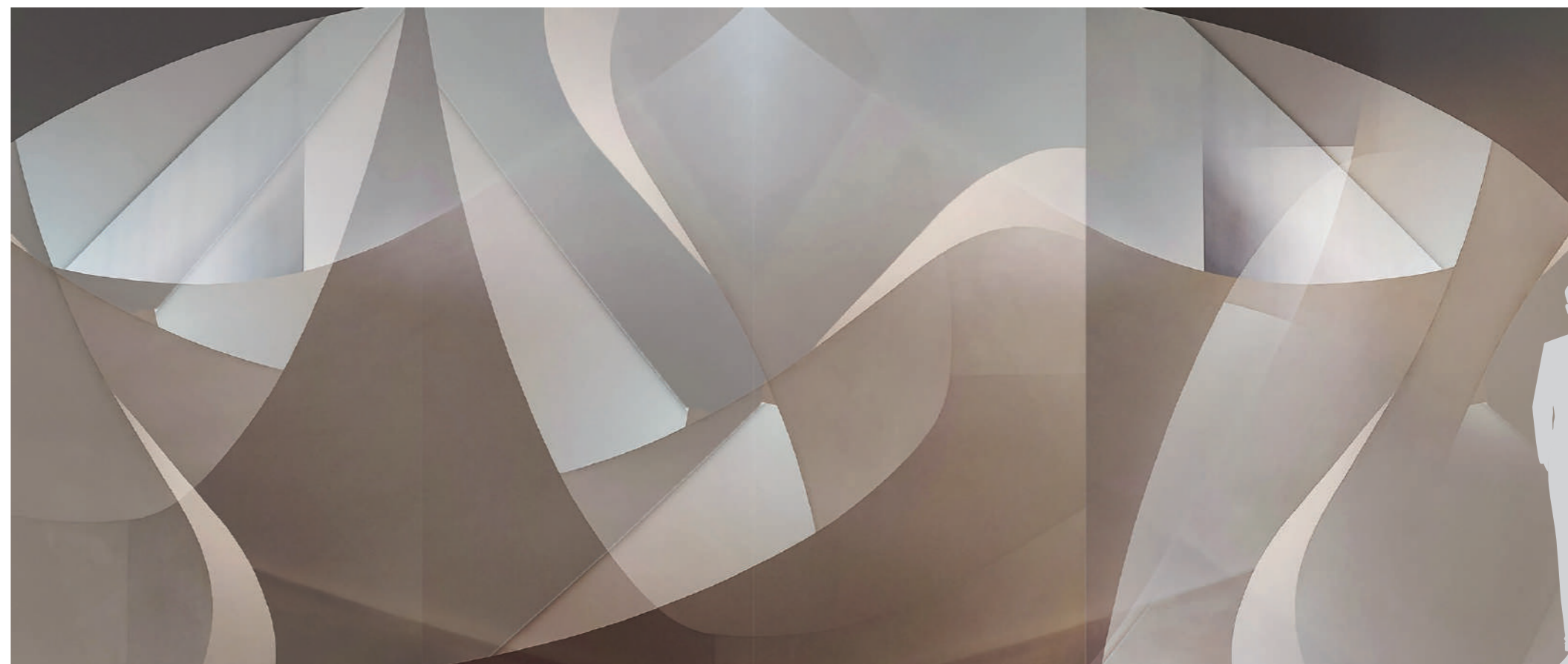
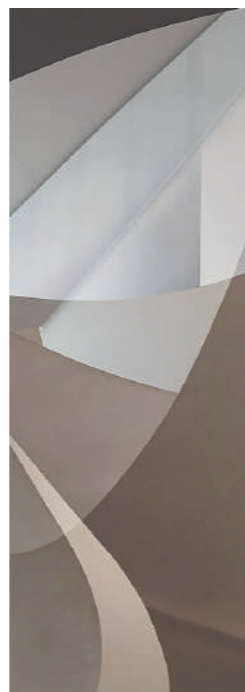
## GRAPHIC COMPOSITION

La composizione grafica si ottiene accostando i pannelli fino a comporre l'immagine nella sua interezza

The graphic design is composed by the matching of the panels until it has become the whole image.



102 CM



350 CM

# SOFT ARCHITECTURE 12

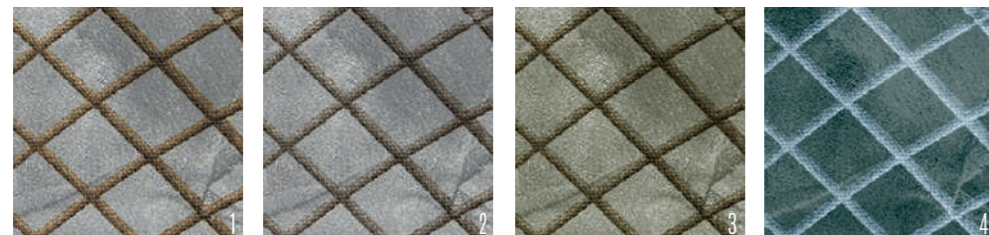


# SOFT ARCHITECTURE 12

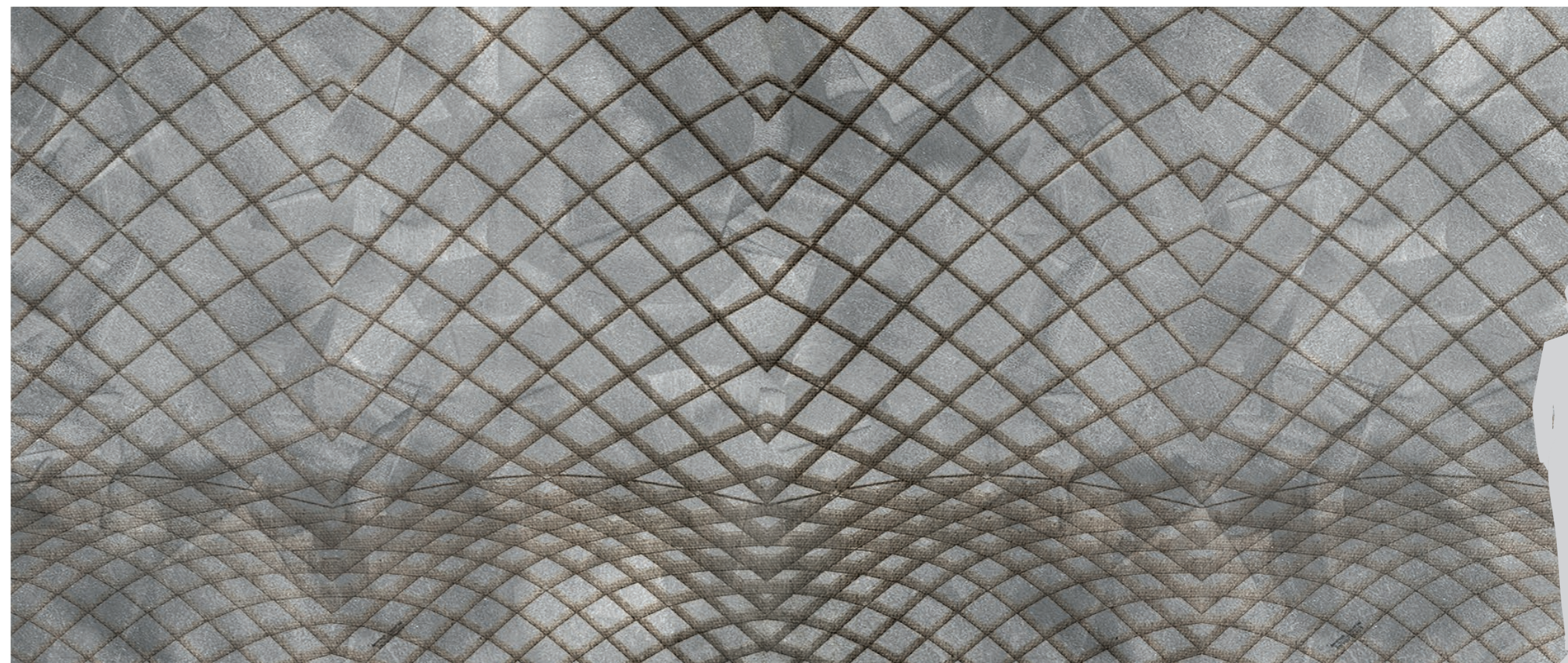
## GRAPHIC COMPOSITION

La composizione grafica si ottiene accostando i pannelli fino a comporre l'immagine nella sua interezza

The graphic design is composed by the matching of the panels until it has become the whole image.



102 CM



350 CM

# SOFT ARCHITECTURE 13

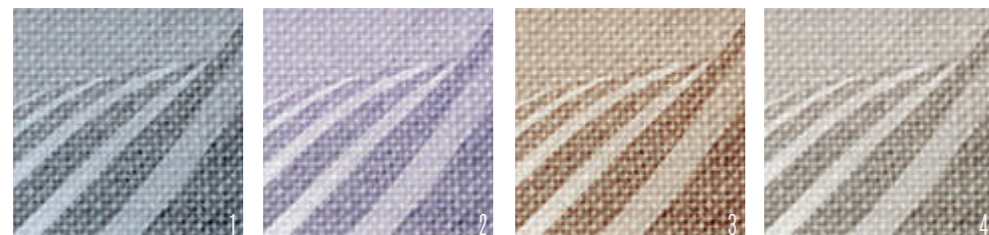


# SOFT ARCHITECTURE 13

## GRAPHIC COMPOSITION

La composizione grafica si ottiene con un solo modulo "A" che genera il pattern e viene ripetuto "n" volte fino a copertura totale della superficie da rivestire.

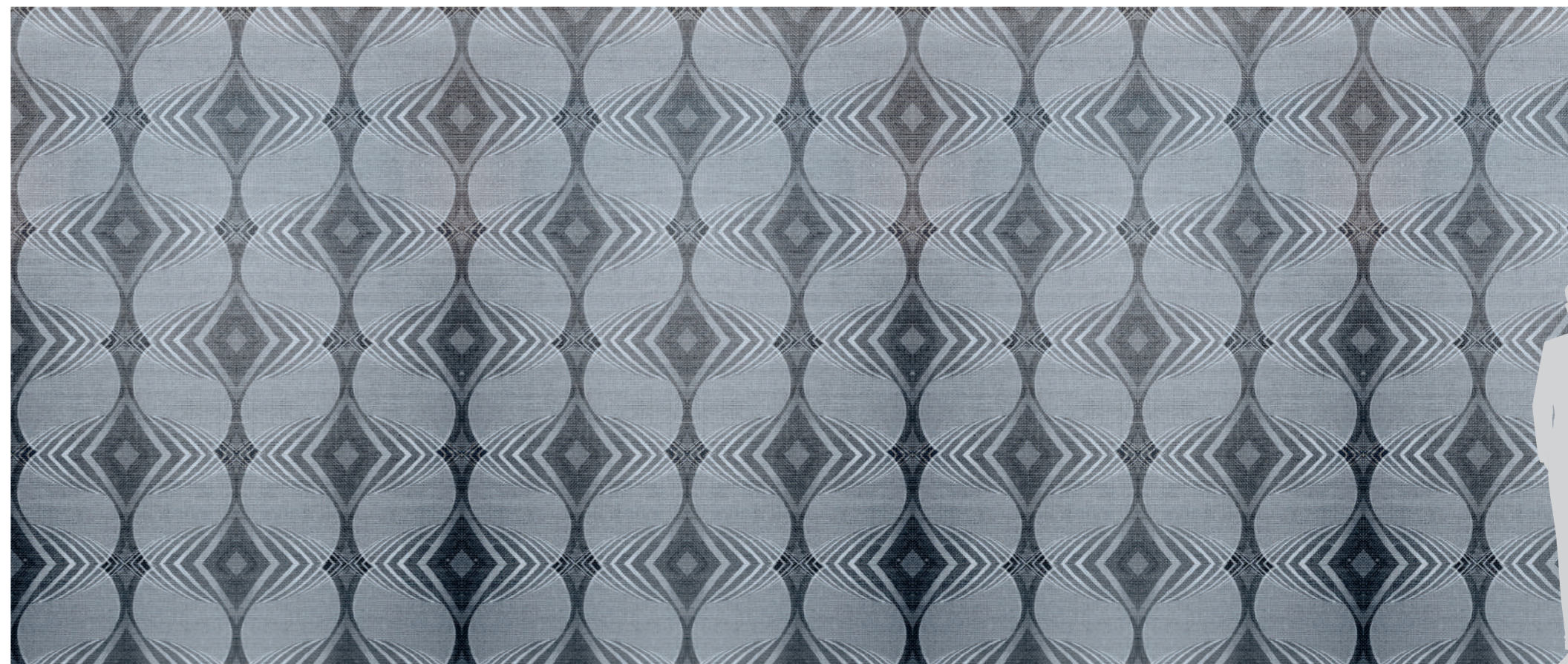
The graphic design is composed by a single module "A" that creates the pattern and it is then repeated "n" times, up to full wall coverage.



102 CM



MODULE A



350 CM

Forme regolari, illusioni di luci e di ombre, melodie di spazi e materiali dalle cromatiche prospettive. Sfumature e colorazioni si mostrano quasi in rilievo, alternano toni caldi e freddi per un dolce sogno.

Regular shapes, lights and shadows illusions, spaces and materials characterized by chromatic perspectives. Shades and colours seem to be embossing, alternating warm and cool colours to fall asleep gently.

VARIATION

05



# VARIATION 01



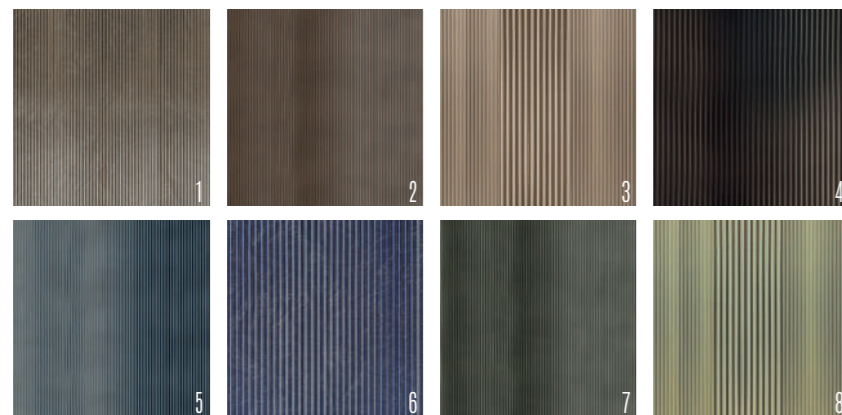
**Marco Piva**  
*Collection*

# VARIATION 01

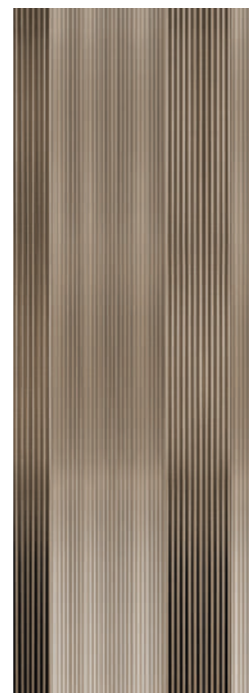
## GRAPHIC COMPOSITION

La composizione grafica si ottiene con un solo modulo "A" che genera il pattern e viene ripetuto "n" volte fino a copertura totale della superficie da rivestire.

The graphic design is composed by a single module "A" that creates the pattern and it is then repeated "n" times, up to full wall coverage.



102 CM



MODULE A



350 CM

# VARIATION 12

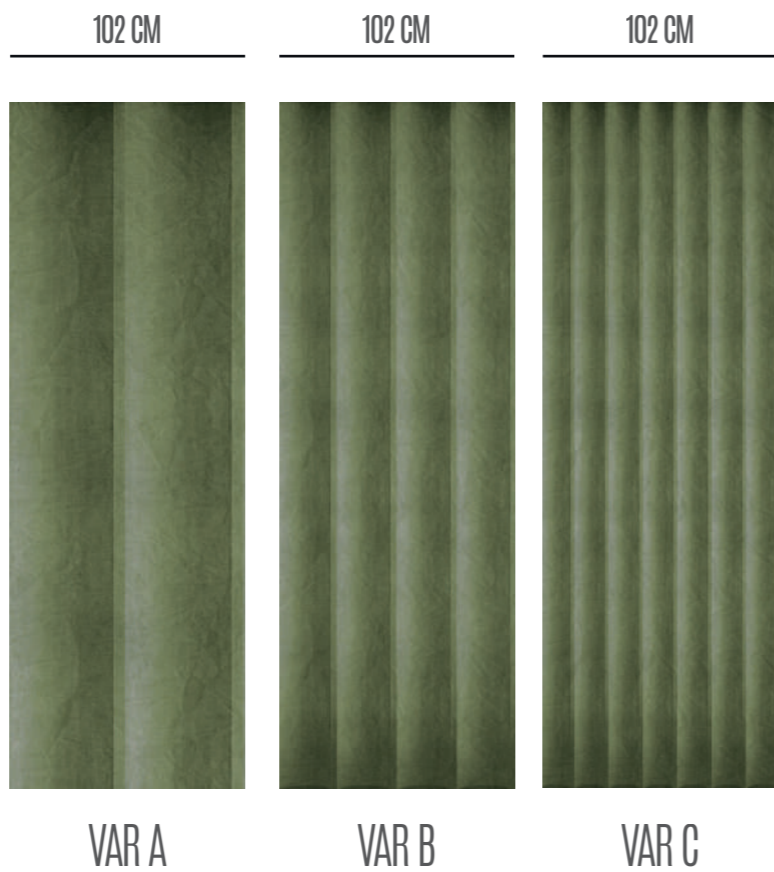


# VARIATION 12

## GRAPHIC COMPOSITION

La composizione grafica si ottiene con un solo modulo "A" che genera il pattern e viene ripetuto "n" volte fino a copertura totale della superficie da rivestire.

The graphic design is composed by a single module "A" that creates the pattern and it is then repeated "n" times, up to full wall coverage.



# VARIATION 13



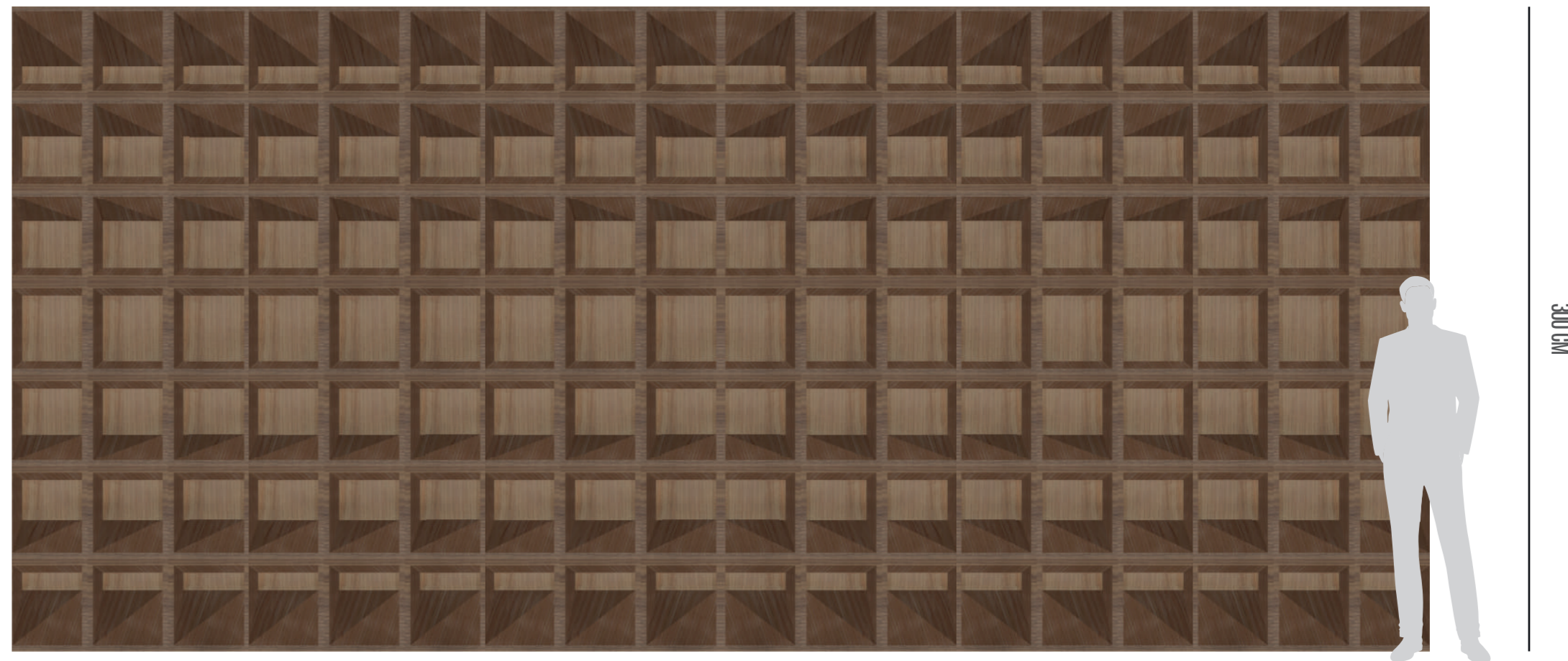
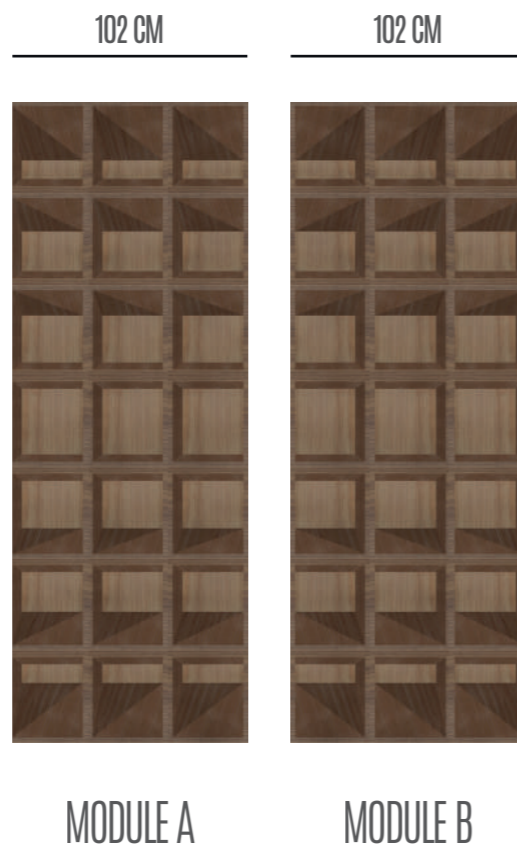
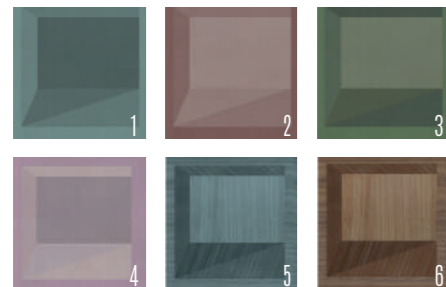
Marco Piva  
*Collection*

# VARIATION 13

## GRAPHIC COMPOSITION

Comporre la grafica accostando i pannelli modulari A+B, ripetendoli e invertendone il verso fino a copertura totale della superficie da rivestire.

The graphic design is composed by matching modular panels "A+B", repeating and reversing them, up to full wall coverage.



# VARIATION 04

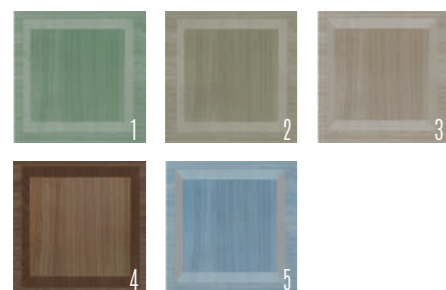


# VARIATION 14

## GRAPHIC COMPOSITION

La composizione grafica si ottiene con un solo modulo "A" che genera il pattern e viene ripetuto "n" volte fino a copertura totale della superficie da rivestire.

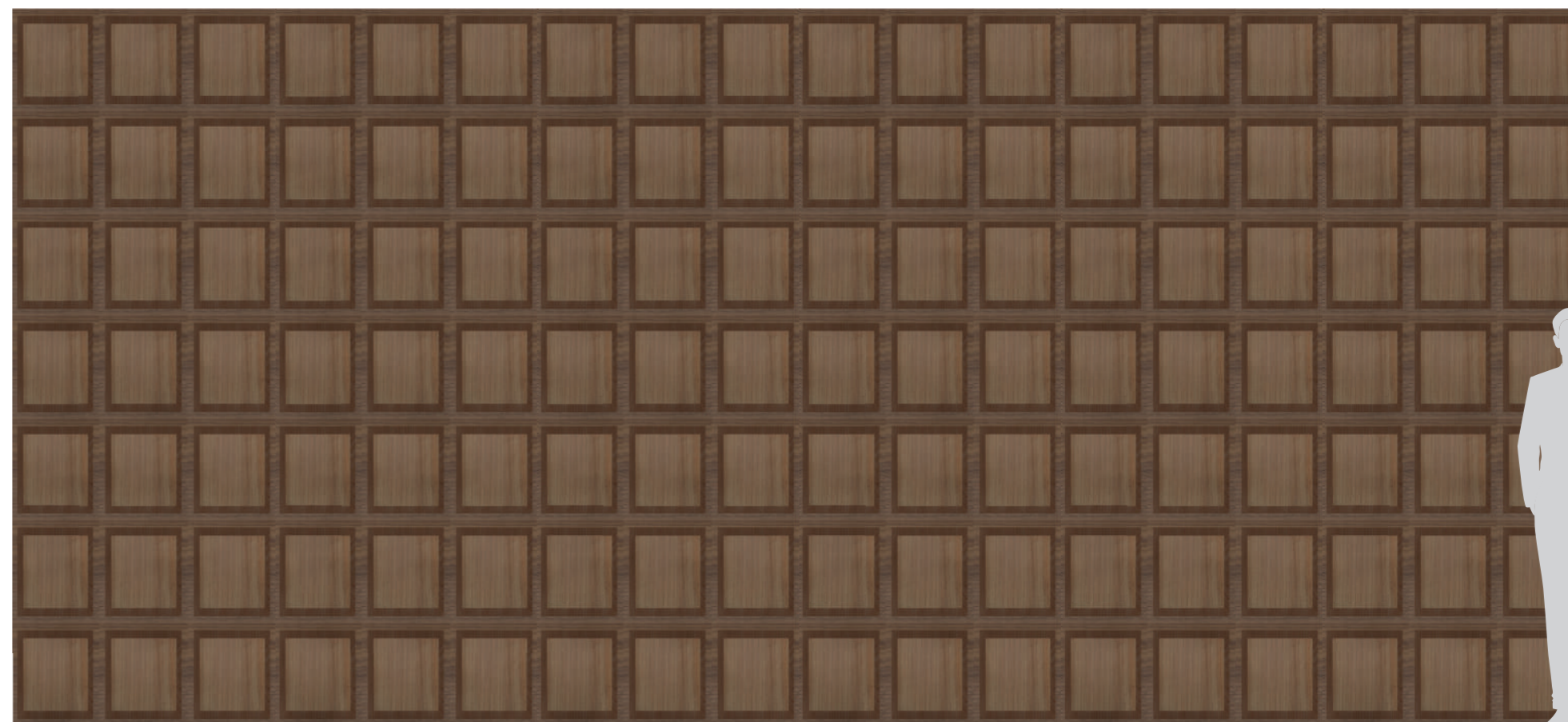
The graphic design is composed by a single module "A" that creates the pattern and it is then repeated "n" times, up to full wall coverage.



102 CM



MODULE A



300 CM





**U**n vortice iridescente, linee come onde leggere sulla sabbia che ruotano intorno al proprio cosmico sole. Policromie delicate e vibranti accompagnano questo viaggio scenografico.

An iridescent vortex, lines as light waves on the sand that revolve around at their own cosmic sun. Soft and vibrant polychromies accompany this scenic journey.

# VORTICE

# 006

# VORTICE

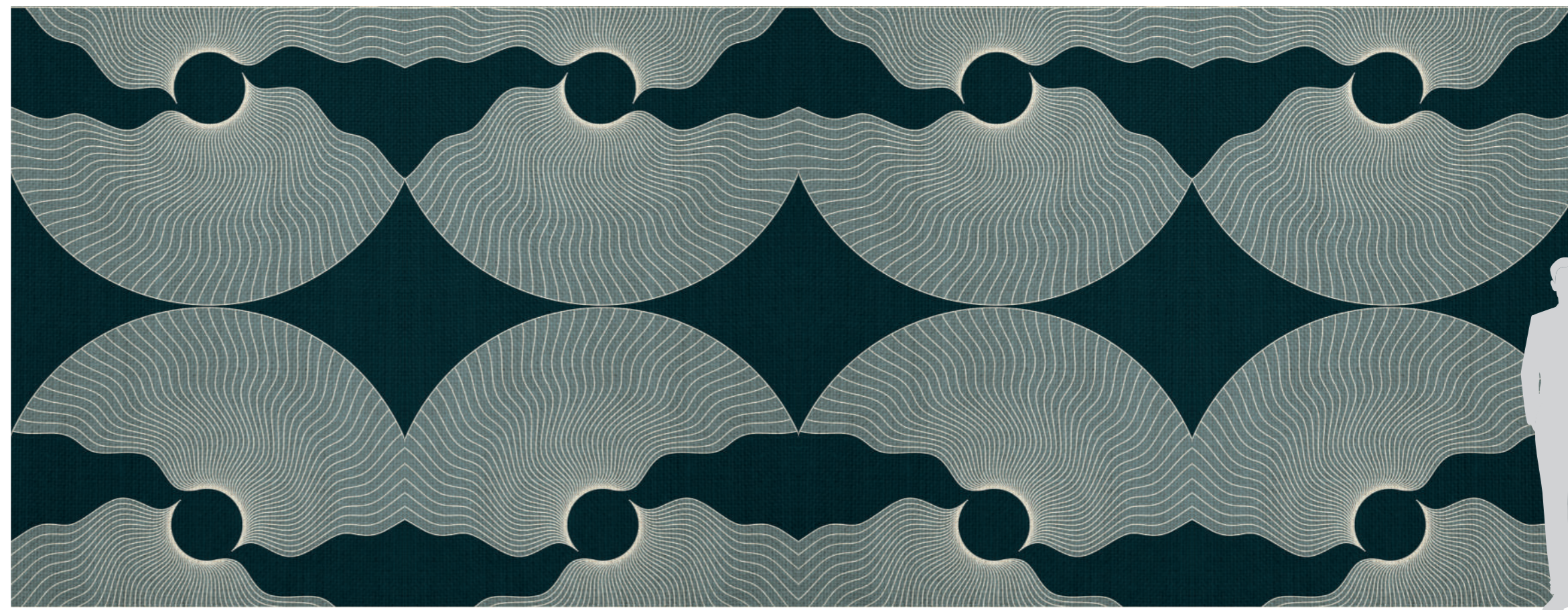
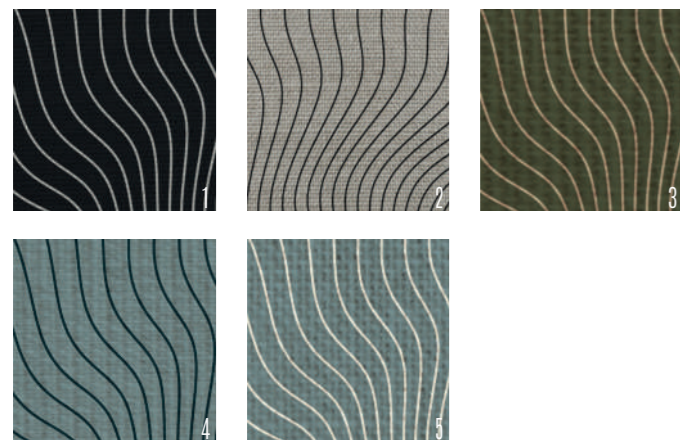


# VORTICE

## GRAPHIC COMPOSITION

La composizione si ottiene con un solo modulo grafico che genera il pattern e viene ripetuto "n" volte fino a copertura totale della superficie da rivestire.

The design is composed by a graphic single module that creates the pattern and it is then repeated "n" times, up to full wall coverage.



300 CM

CONDIZIONI DI UTILIZZO: QUESTO DOCUMENTO È DI PROPRIETÀ DELLA GEMANCO DESIGN S.R.L. TUTTI I DIRITTI SONO RISERVATI E NON POSSONO ESSERE RIPRODOTTI, USATI O RESI DISPONIBILI IN QUALCHE MODO O MANIERA NON AUTORIZZATA DALLA GEMANCO DESIGN S.R.L.

TERMS OF USE: THIS DOCUMENT IS OWNED BY GEMANCO DESIGN S.R.L. ALL RIGHTS ARE RESERVED AND MAY NOT BE REPRODUCED, USED OR MADE AVAILABLE IN ANY WAY OR MANNER THAT HAS NOT BEEN AUTHORIZED BY GEMANCO DESIGN SRL.

多重用途: 该文件归 GEMANCO DESIGN s.r.l.所有, 保留所有的权利, 不得将文件未经 GEMANCO DESIGN s.r.l.授权的任何方式复制、提供或使用。





VIA DELLE DALIE, 1

70026 MODUGNO (BA) - ITALY

T. +39 080 531 57 00

E. [INFO@GEMANCODESIGN.IT](mailto:INFO@GEMANCODESIGN.IT)

[WWW.GEMANCODESIGN.IT](http://WWW.GEMANCODESIGN.IT)

[WWW.GEMANCODESIGNAPP.IT](http://WWW.GEMANCODESIGNAPP.IT)

